

# BUTTERFLY AND BALL VALVES



MEMBER OF  
INTERPUMP GROUP

INOXPA are committed to constantly improve the entire product range and now have upgraded our main family of valves and accessories, with significant improvements in design, operation, materials and with the introduction of new certification: butterfly and ball valves, actuators and control tops.



#### **Butterfly valve A480/A490**

- Reduced torque
- 3-A gaskets
- More resistant and reliable
- EHEDG approval

#### **Ball valve A640**

- Constant torque
- Controlled ball movement
- Piggable DIN & OD

#### **Actuator A940**

- More resistant and reliable
- One model with/without C-TOP S control unit
- One single support for all sizes

#### **C-TOP S control unit**

- Hall Effect sensors on PCB
- Auto set-up
- Communication: digital & As-I

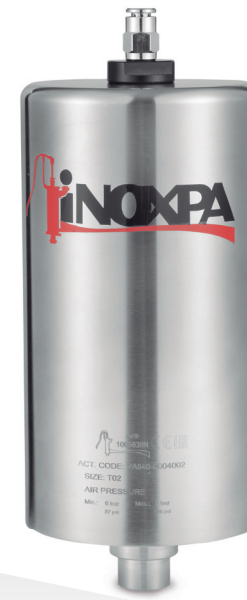
# BALL VALVE A640



# BUTTERFLY VALVE A480 A490



# ACTUATOR A940

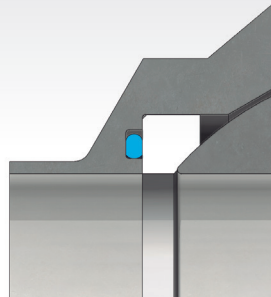


# CONTROL UNIT C-TOP S



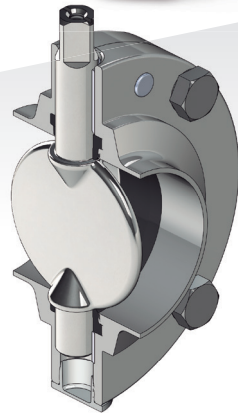
## SEAT

- Controlled O-rings compressibility
- Limited ball movement under pressure (avoiding metal-to-metal contact)
- Constant torque throughout the life of the valve



## BODY

- New design of valve body**
- Reduced operating torque
  - Increased endurance
  - Higher reliability
  - Improved bushing retention
  - EHEDG approval



- Improved shaft and spring endurance make it highly reliable
- Standard design prepared for accessories
- One actuator model: with/without C-TOP S control head



## BRACKETS

- Specific drills for the assembly of the new actuator brackets
- New bracket design: the same model and size for all valve sizes (DN25/1" - DN100/4")



## SEAL



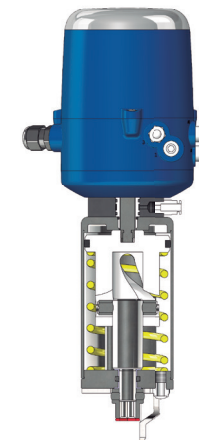
New T-shaped design for better retention and lower torque

## BRACKETS

- Specific drills for the assembly of the new actuator brackets
- New bracket design: the same model and size for all valve sizes (DN25/1" - DN100/4")



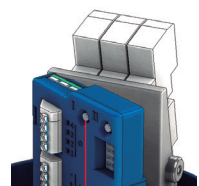
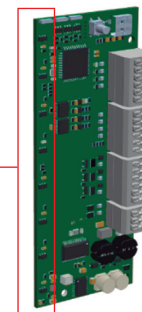
Supplement for control unit



- Fewer brackets required for valve attachment
- Easy assembly with a bracket and only 2 screws
- Small actuator T1 up to DN50

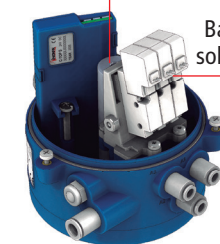
- Base mounted solenoid valves (up to 3)
- Opaque cover with translucent upper part
- Sensors on PCB
- Communication: Digital, AS-I
- Push-button setup (auto-setup)
- Memory for 3 positions (+ 1 external sensor)

Array of sensors (Hall Effect)

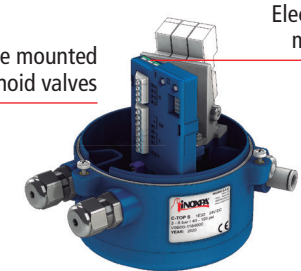


Push-button setup

Target



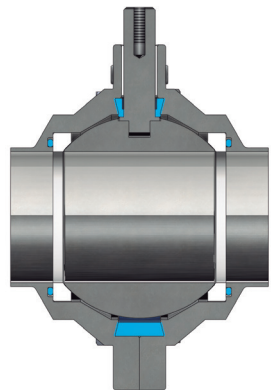
Base mounted solenoid valves



Electronic module

# FULLY PIGGABLE

Specific balls for OD & DIN (full-bore piggable valves)





**INOXPA S.A.U.**

Telers, 60

17820 Banyoles - Spain

Phone +34 972 57 52 00

Fax +34 972 57 55 02

[inoxpa@inoxpa.com](mailto:inoxpa@inoxpa.com)

**[www.inoxpa.com](http://www.inoxpa.com)**

Dip. Legal: GI.XXX-2020

C.VALVES.EN.0221